

# Installation and Registration Summary

## KeyMaths3 – Diagnostic Assessment (DA) and Essential Resources (ER)

The purpose of this document is to provide you with a 'Step by Step' guide for installing and registering the KeyMaths3 application. For more detailed information on any of the application's features, please refer to, or download the *User Guide* from the KeyMaths3 CD.

**We recommend this product be installed by your IT department or it must be installed by a user who has Local Administration rights on the computer where the software is being installed.**

### Step 1 – Install the application

Install the KeyMaths3 Diagnostic Assessment (DA) and Essential Resources (ER) software as per the installation instructions located on the inside panel on the front cover of each CD ROM case – refer Figure 1

<p><b>Installing the ASSIST™ Software</b></p> <p>You will need to have administrative privileges to your computer before installing this software.</p> <ol style="list-style-type: none"> <li>1. Close all applications.</li> <li>2. Insert the ASSIST CD-ROM into the CD-ROM drive.</li> <li>3. Follow the instructions for your operating system:</li> </ol> <p><b>Windows® 2000/XP/Vista:</b></p> <p>Wait for the auto-launch to appear, and follow the onscreen instructions to install the ASSIST software to your desktop.</p> <p><b>Note:</b> If the auto-launch does not run, do the following:</p> <ol style="list-style-type: none"> <li>a. Double-click on My Computer.</li> <li>b. Double-click on your CD-ROM drive.</li> <li>c. Double-click on the Setup.exe icon to begin installing.</li> </ol> <p>After the KeyMaths-3 DA ASSIST is installed, another installer will launch for the Java™ Runtime Environment. If the proper version of Java is already installed, you will be asked if you would like to reinstall the software. This is referencing the Java Runtime Environment and not the KeyMaths-3 DA ASSIST. Click No to exit the install. If the proper version is not installed, a license agreement will appear. Follow the onscreen prompts to complete installation of the Java Runtime Environment. You may be prompted to restart once installation is complete.</p>	<p><b>Macintosh® OS X v10.x</b></p> <ol style="list-style-type: none"> <li>a. Double-click on the CD icon that appears on your desktop.</li> <li>b. Double-click on the Setup icon.</li> <li>c. Follow the onscreen instructions to install the ASSIST software to your desktop.</li> </ol> <p><b>Opening the ASSIST Software</b></p> <p>Use one of the following methods to open the ASSIST software:</p> <p>Double-click on the KeyMaths-3 DA ASSIST icon on your desktop.</p> <p>— OR —</p> <p><b>Windows 2000/XP/Vista:</b></p> <p>Go to your computer's <b>[Start]</b> menu.</p> <p>Select <b>Programs » Pearson » KeyMaths-3 DA ASSIST » KeyMaths-3 DA ASSIST</b></p> <p><b>Macintosh OS X v10.x:</b></p> <p>Go to <b>Macintosh HD » Applications » KeyMaths-3 DA ASSIST » KeyMaths-3 DA ASSIST</b></p> <p><b>Important:</b> Your User Name and Password are located on the sticker on the back of the software CD case.</p>
--	--

### 1 – DA Assist

<p><b>Installing the KeyMaths™-3 Essential Resources Software</b></p> <p>You will need to have administrative privileges to your computer before installing this software.</p> <ol style="list-style-type: none"> <li>1. Close all applications.</li> <li>2. Insert the KeyMaths-3 ER CD-ROM into the CD-ROM drive.</li> <li>3. Follow the instructions for your operating system:</li> </ol> <p><b>Windows 2000 or later:</b></p> <p>Wait for the auto-launch to appear, and follow the onscreen instructions to install the software to your desktop.</p> <p><b>Note:</b> If the auto-launch does not run, do the following:</p> <ol style="list-style-type: none"> <li>a. Double-click on My Computer.</li> <li>b. Double-click on your CD-ROM drive.</li> <li>c. Double-click on the Setup.exe icon to begin installing.</li> </ol> <p>After the software is installed, another installer will launch for the Java™ 2 Runtime Environment. If the proper version of Java is already installed, you will be asked to modify or remove the current installation. Click Cancel to exit the install. If the proper version is not installed, a license agreement will appear. Follow the onscreen prompts to complete installation of the Java 2 Runtime Environment. You may be prompted to restart once installation is complete.</p>	<p><b>Macintosh® OS X v10.3 or later:</b></p> <ol style="list-style-type: none"> <li>a. Double-click on the CD icon that appears on your desktop.</li> <li>b. Double-click on the Setup icon.</li> <li>c. Follow the onscreen instructions to install the software to your desktop.</li> </ol> <p><b>Opening the Software</b></p> <p>Use one of the following methods to open the software:</p> <p>Double-click on the KeyMaths-3 ER icon on your desktop.</p> <p>— OR —</p> <p><b>Windows 2000 or later:</b></p> <p>Go to your computer's <b>[Start]</b> menu.</p> <p>Select <b>Programs or All Programs » Pearson » KeyMaths-3 » KeyMaths-3 Essential Resources</b></p> <p><b>Macintosh OS X v10.3 or later:</b></p> <p>Go to <b>Macintosh HD » Applications » KeyMaths-3 » KeyMaths-3 Essential Resources</b></p>
---	--

### 2 – ER L-I

<p><b>Installing the KeyMaths™-3 Essential Resources Software</b></p> <p>You will need to have administrative privileges to your computer before installing this software.</p> <ol style="list-style-type: none"> <li>1. Close all applications.</li> <li>2. Insert the KeyMaths-3 ER CD-ROM into the CD-ROM drive.</li> <li>3. Follow the instructions for your operating system:</li> </ol> <p><b>Windows 2000 or later:</b></p> <p>Wait for the auto-launch to appear, and follow the onscreen instructions to install the software to your desktop.</p> <p><b>Note:</b> If the auto-launch does not run, do the following:</p> <ol style="list-style-type: none"> <li>a. Double-click on My Computer.</li> <li>b. Double-click on your CD-ROM drive.</li> <li>c. Double-click on the Setup.exe icon to begin installing.</li> </ol> <p>After the software is installed, another installer will launch for the Java™ 2 Runtime Environment. If the proper version of Java is already installed, you will be asked to modify or remove the current installation. Click Cancel to exit the install. If the proper version is not installed, a license agreement will appear. Follow the onscreen prompts to complete installation of the Java 2 Runtime Environment. You may be prompted to restart once installation is complete.</p>	<p><b>Macintosh® OS X v10.3 or later:</b></p> <ol style="list-style-type: none"> <li>a. Double-click on the CD icon that appears on your desktop.</li> <li>b. Double-click on the Setup icon.</li> <li>c. Follow the onscreen instructions to install the software to your desktop.</li> </ol> <p><b>Opening the Software</b></p> <p>Use one of the following methods to open the software:</p> <p>Double-click on the KeyMaths-3 ER icon on your desktop.</p> <p>— OR —</p> <p><b>Windows 2000 or later:</b></p> <p>Go to your computer's <b>[Start]</b> menu.</p> <p>Select <b>Programs or All Programs » Pearson » KeyMaths-3 » KeyMaths-3 Essential Resources</b></p> <p><b>Macintosh OS X v10.3 or later:</b></p> <p>Go to <b>Macintosh HD » Applications » KeyMaths-3 » KeyMaths-3 Essential Resources</b></p>
---	--

### 3 – ER L-II

Figure 1 – Install instructions

**Note:** Once you have completed the installation as per the instructions you will notice both the KeyMaths 3 Diagnostic Assessment (DA) and the Essential Resources (ER) shortcut icons will appear on your desktop even if you have only purchased/installed one of the products – refer Figure 2

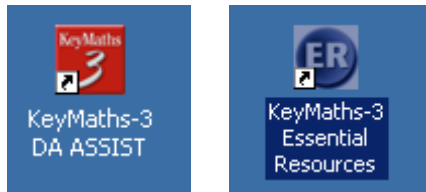


Figure 2 – Shortcut Icons

**Important** - Before proceeding to step 2 you will need the information on the label located on the back of your CD-ROM case – refer Figure 3

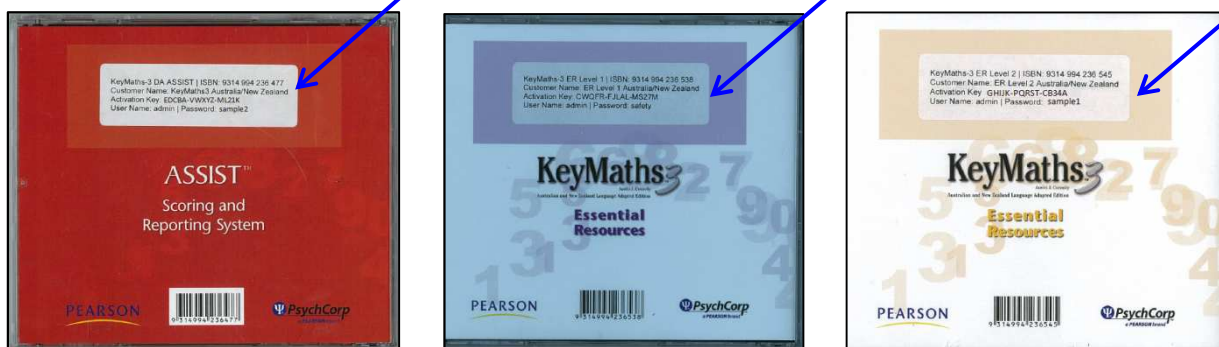


Figure 3 – Back of CD

## Step 2 – Getting Started – Registering the application.

In order to start using your new application you need to complete the registration process. To do this please follow these steps.

**1.** Once the disc(s) are installed **double click** on the corresponding shortcut icon. We recommend selecting the DA Assist first as you will be able to register all 3 products at the one time. – refer Figure 4



Figure 4 – Desktop Icons

**Note:** If you select the Essential Resources (ER) icon first the DA Scoring and Reporting window will appear first and then the Essential Resources window and Login screen will open – refer Figure 5

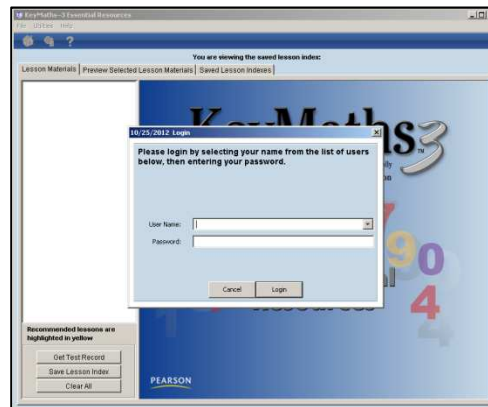


Figure 5 – DA and ER window

2. When First Run window appears, select from the options and **click** Next - refer Figure 5

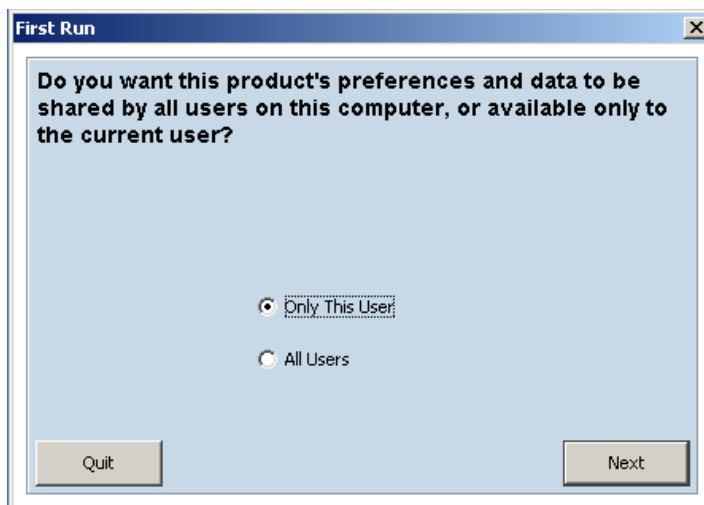


Figure 5 – First Run window

3. When Database Location window appears, select from the options and **click** *Next* – refer Figure 6

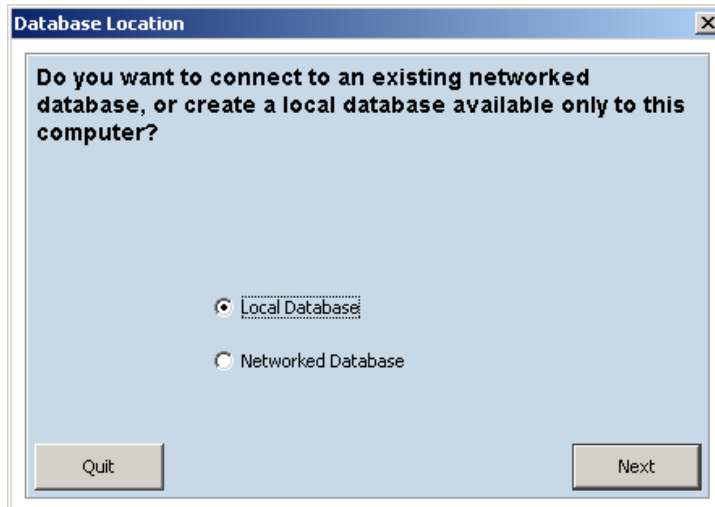


Figure 6 – Database Location window

4. In the Activation box next to the appropriate product **enter** the Customer Name and Activation Key, exactly as it appears on the label on the back of your CD-ROM case. Then **click** *Continue* – refer Figure 7

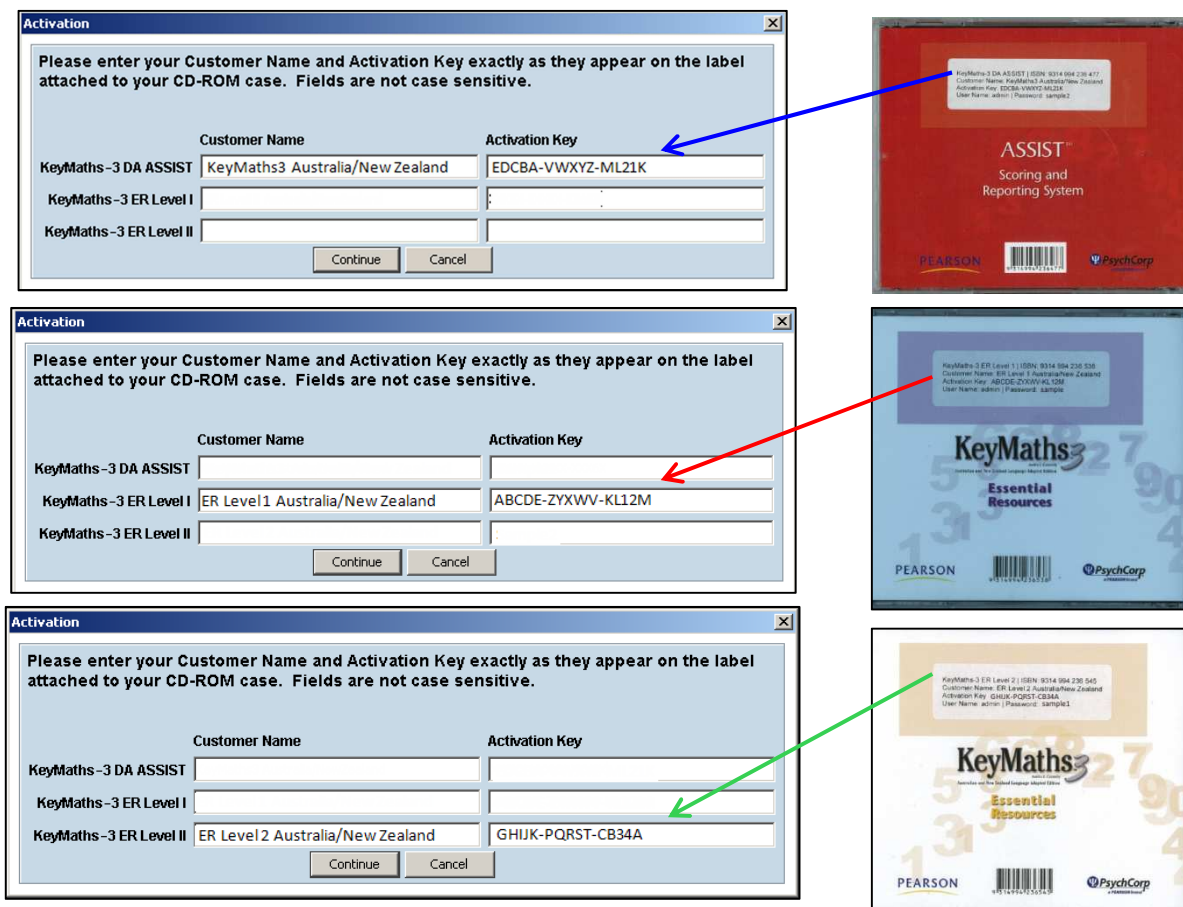


Figure 7 – Overview

**Note:** The Customer Name and Activation Key is different for each product. Although all the fields are showing for the ER (Essential Resources) L-I, ER L-II and the DA (Diagnostic Assessment) **only** enter the information for the product of the Icon you clicked on is Step 1.

**5.** Login: **Enter** The User Name and Password which is also located on the label at the back of the CD-ROM case. Then **Click Login** – refer Figure 8

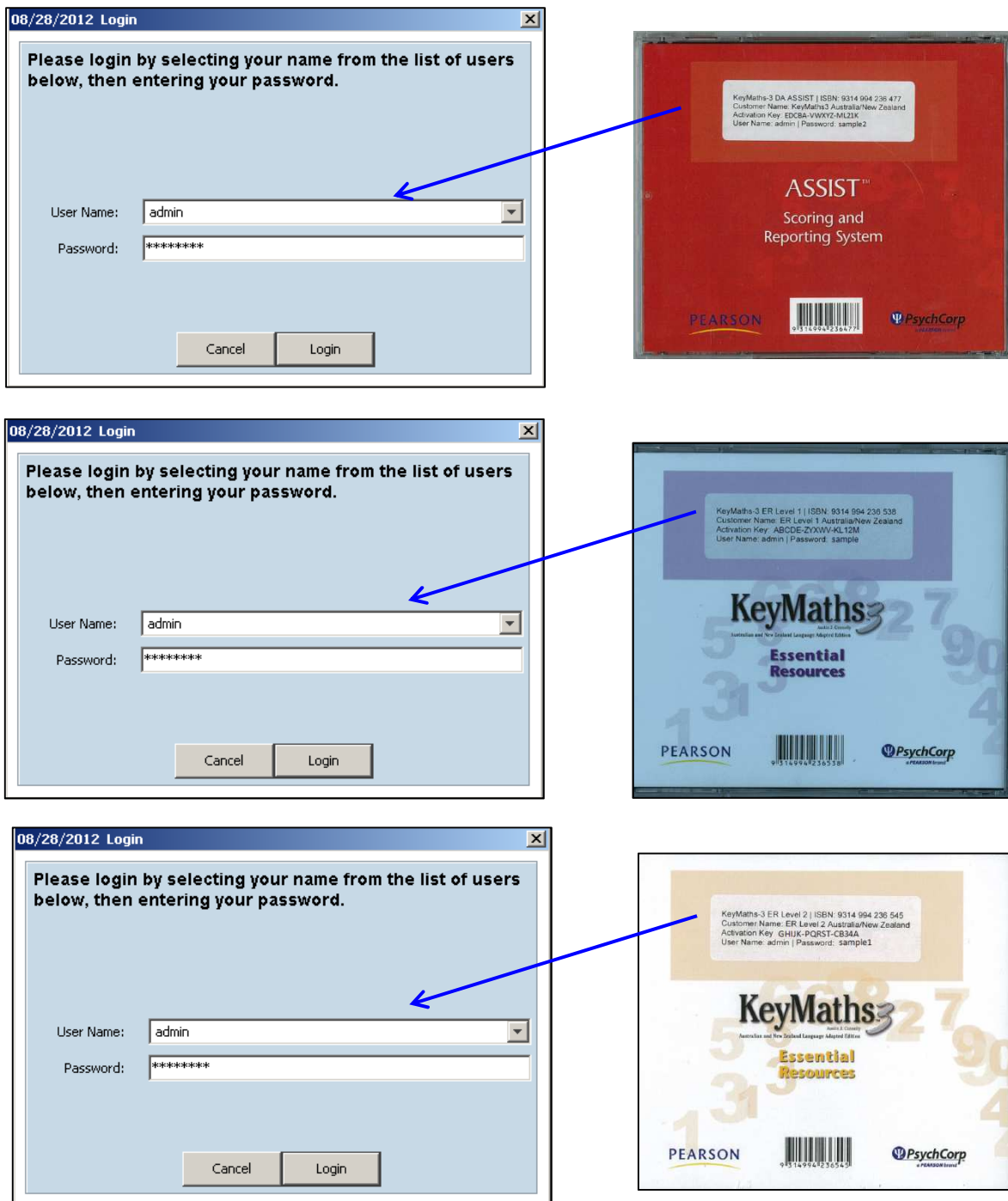


Figure 8 – Login in Window and Back of CD