

---

WRMT™-III

Woodcock Reading Mastery Tests, Third Edition

Progress Report

*Richard W. Woodcock*

---

Name: Student Sample

Gender: Female

Birth Date: 03/04/2004

Norm Group: Grade

Copyright © 2011 NCS Pearson, Inc. All rights reserved.

**Pearson**, the **PSI logo**, **PsychCorp** and **WRMT** are trademarks in the U.S. and/or other countries of Pearson Education, Inc., or its affiliate(s).

**TRADE SECRET INFORMATION**

Not for release under HIPAA or other data disclosure laws that exempt trade secrets from disclosure.

[ 1.1 / RE1 / QG1 ]

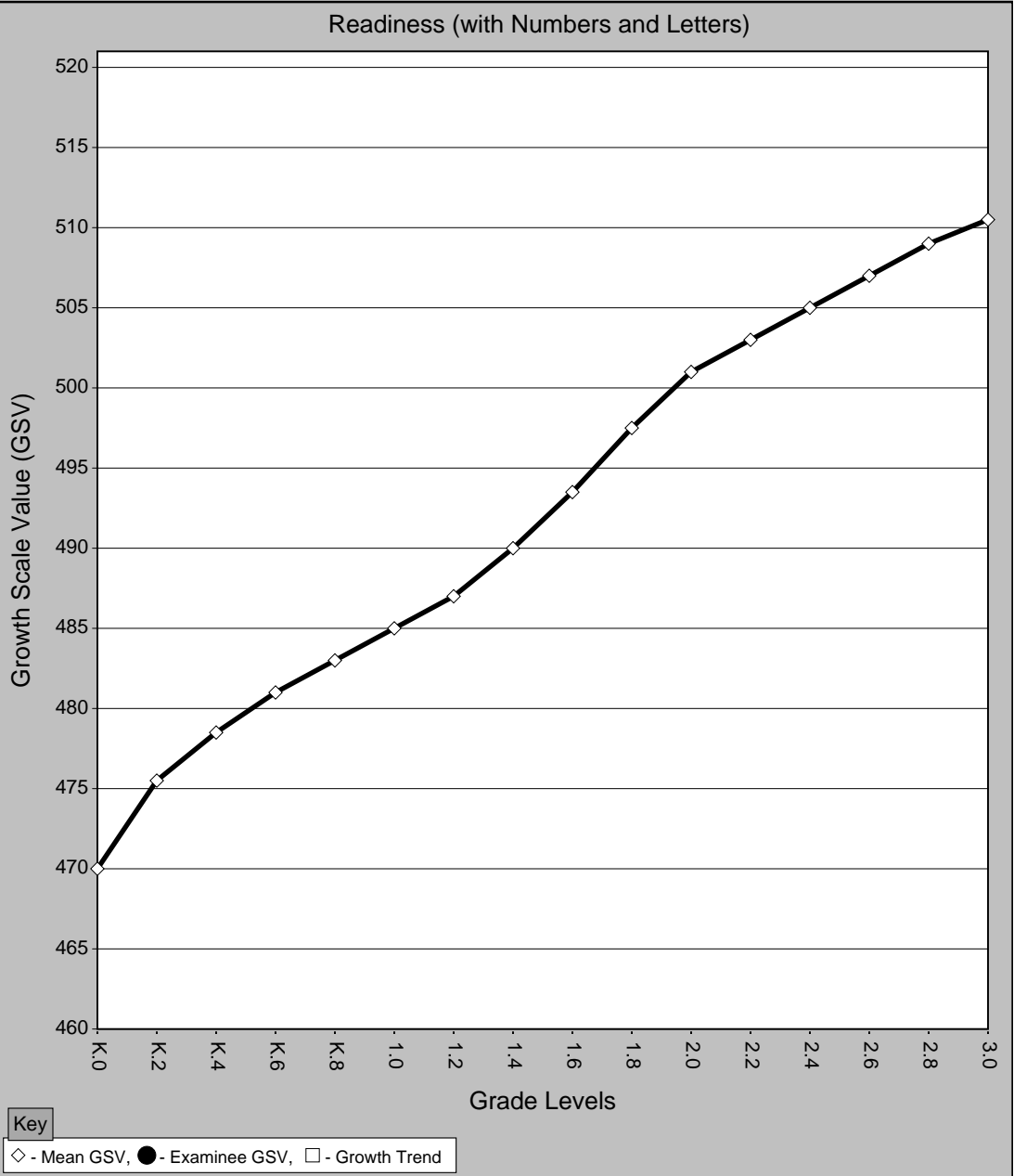
The WRMT-III Progress Report depicts Student Sample's performance over multiple test administrations using growth scale values (GSVs). GSVs are a type of developmental scale score that measures progress over the full range of WRMT-III reading skills.

The GSV Chart presents a graphical display of Student Sample's progress over administrations. Average GSVs for the norm group are represented by white diamonds connected by a solid line. Student Sample GSV scores are represented by black circles connected by a solid line. Student Sample growth rate averaged across administrations are represented by white squares connected by a dashed line. The table below provides useful data for each administration, including a percentile (%ile) rank, a GSV score, and the change in GSV score since the first administration (Change over baseline). The table also presents growth rates (in GSV units per year) for both Student Sample and the norm group.

Administrations			Examinee Performance			Growth Rate (GSV per yr.)	
Test Date	Grade Level	Form	%ile Rank	GSV	Change over baseline	Examinee	Norm Group
08/26/2011	2.0 (F)	A	-	477	---	---	---
11/25/2011	2.3 (F)	B	-	486	-	-	-
02/26/2012	2.6 (W)	A	-	-	-	-	-

- (\*) change over baseline is significant  
(#) change over previous administration is significant  
(N/A) Grade based norms unavailable for pre-k or adult administrations  
(-) All tests within this cluster not administered or administered out of level  
(/) Score(s) unavailable for summer administrations

GSV Chart



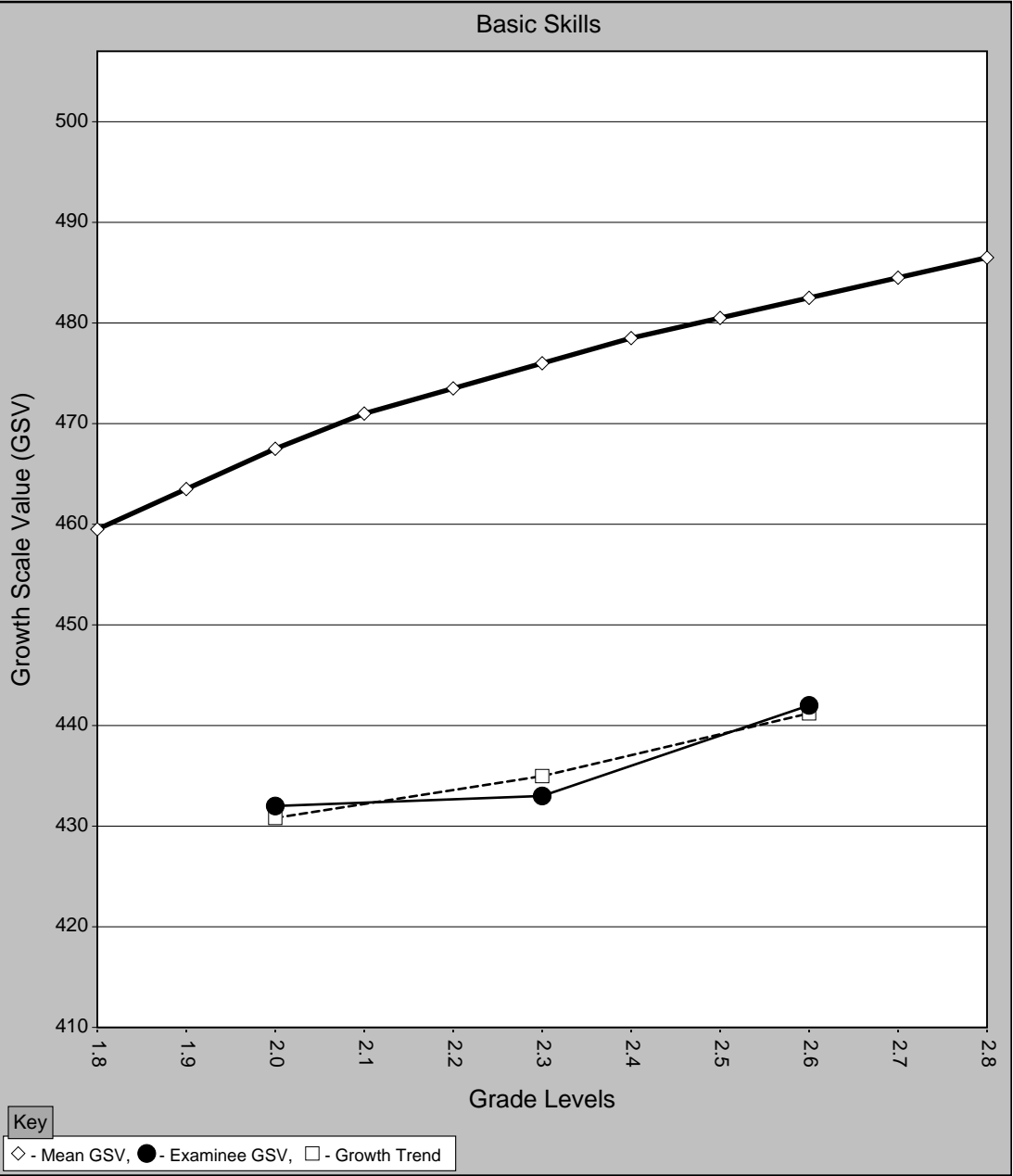
The WRMT-III Progress Report depicts Student Sample's performance over multiple test administrations using growth scale values (GSVs). GSVs are a type of developmental scale score that measures progress over the full range of WRMT-III reading skills.

The GSV Chart presents a graphical display of Student Sample's progress over administrations. Average GSVs for the norm group are represented by white diamonds connected by a solid line. Student Sample GSV scores are represented by black circles connected by a solid line. Student Sample growth rate averaged across administrations are represented by white squares connected by a dashed line. The table below provides useful data for each administration, including a percentile (%ile) rank, a GSV score, and the change in GSV score since the first administration (Change over baseline). The table also presents growth rates (in GSV units per year) for both Student Sample and the norm group.

Administrations			Examinee Performance			Growth Rate (GSV per yr.)	
Test Date	Grade Level	Form	%ile Rank	GSV	Change over baseline	Examinee	Norm Group
08/26/2011	2.0 (F)	A	6.0	432	---	---	---
11/25/2011	2.3 (F)	B	8.0	433	1	5.0	42.5
02/26/2012	2.6 (W)	A	7.0	442	10	20.8	30.0

- (\*) change over baseline is significant  
(#) change over previous administration is significant  
(N/A) Grade based norms unavailable for pre-k or adult administrations  
(-) All tests within this cluster not administered or administered out of level  
(/) Score(s) unavailable for summer administrations

GSV Chart



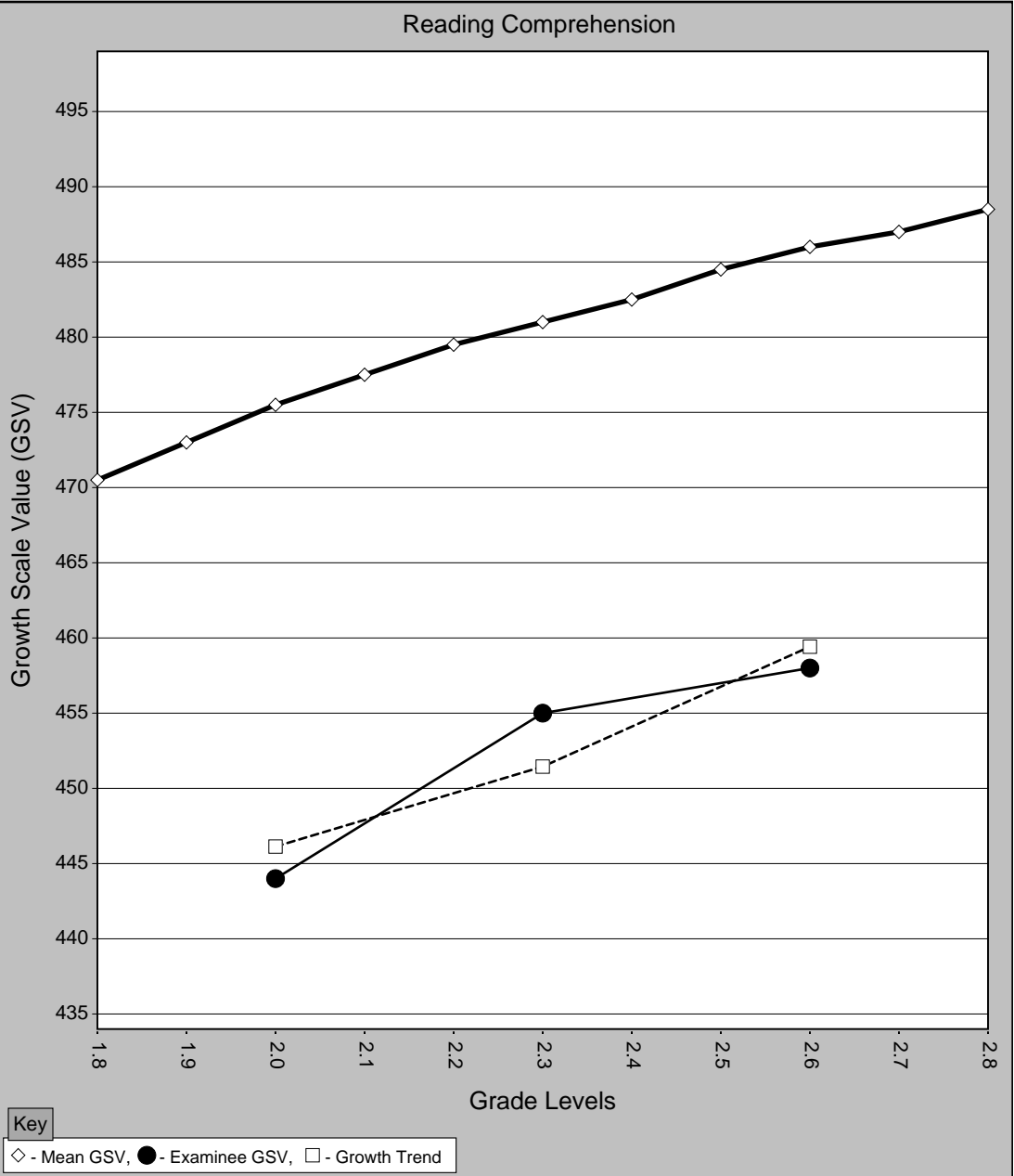
The WRMT-III Progress Report depicts Student Sample's performance over multiple test administrations using growth scale values (GSVs). GSVs are a type of developmental scale score that measures progress over the full range of WRMT-III reading skills.

The GSV Chart presents a graphical display of Student Sample's progress over administrations. Average GSVs for the norm group are represented by white diamonds connected by a solid line. Student Sample GSV scores are represented by black circles connected by a solid line. Student Sample growth rate averaged across administrations are represented by white squares connected by a dashed line. The table below provides useful data for each administration, including a percentile (%ile) rank, a GSV score, and the change in GSV score since the first administration (Change over baseline). The table also presents growth rates (in GSV units per year) for both Student Sample and the norm group.

Administrations			Examinee Performance			Growth Rate (GSV per yr.)	
Test Date	Grade Level	Form	%ile Rank	GSV	Change over baseline	Examinee	Norm Group
08/26/2011	2.0 (F)	A	2.0	444	---	---	---
11/25/2011	2.3 (F)	B	5.0	455	11 * #	55.0	27.5
02/26/2012	2.6 (W)	A	5.0	458	14 *	26.6	21.0

(\*) change over baseline is significant  
(#) change over previous administration is significant  
(N/A) Grade based norms unavailable for pre-k or adult administrations  
(-) All tests within this cluster not administered or administered out of level  
(/) Score(s) unavailable for summer administrations

GSV Chart



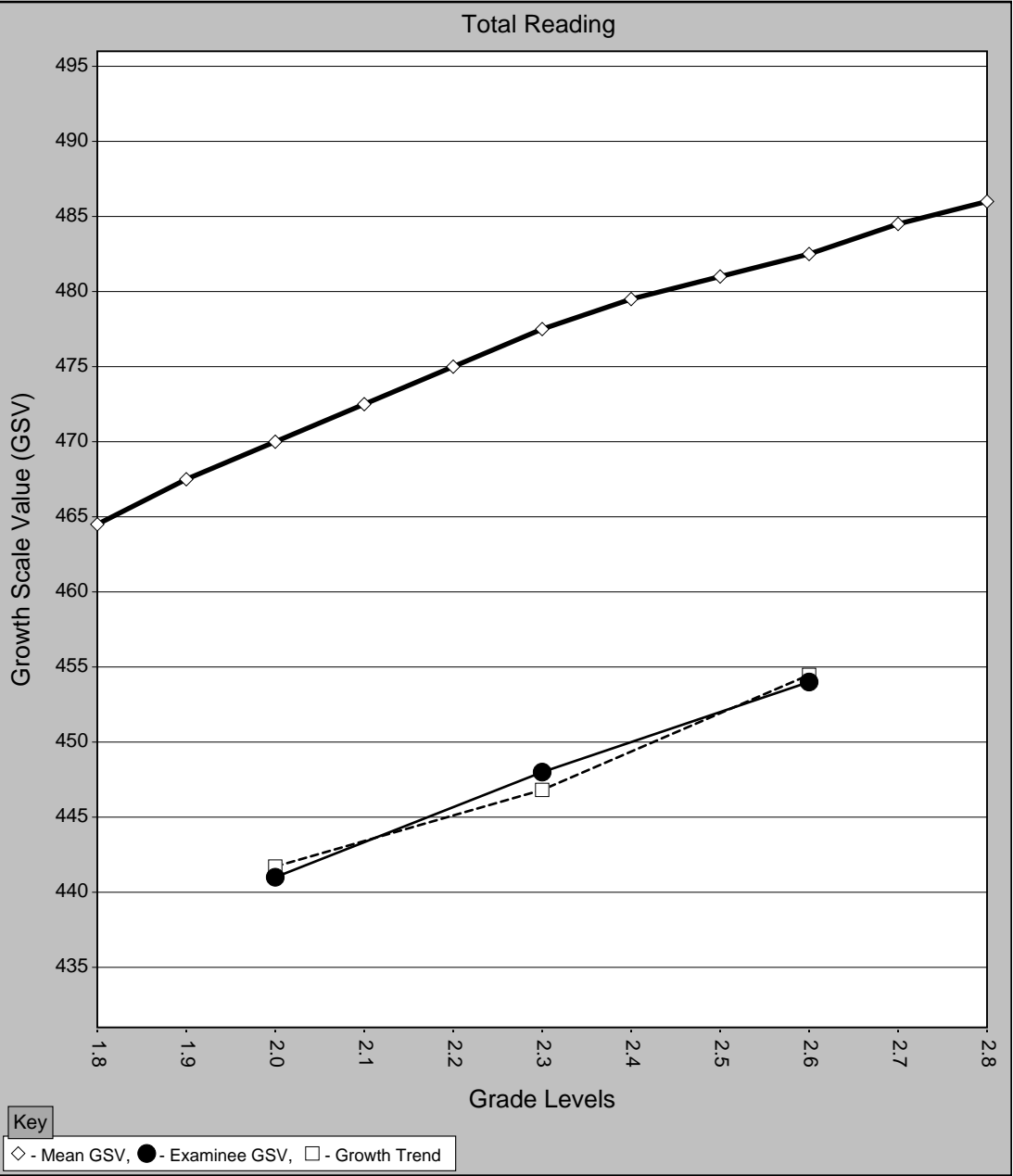
The WRMT-III Progress Report depicts Student Sample's performance over multiple test administrations using growth scale values (GSVs). GSVs are a type of developmental scale score that measures progress over the full range of WRMT-III reading skills.

The GSV Chart presents a graphical display of Student Sample's progress over administrations. Average GSVs for the norm group are represented by white diamonds connected by a solid line. Student Sample GSV scores are represented by black circles connected by a solid line. Student Sample growth rate averaged across administrations are represented by white squares connected by a dashed line. The table below provides useful data for each administration, including a percentile (%ile) rank, a GSV score, and the change in GSV score since the first administration (Change over baseline). The table also presents growth rates (in GSV units per year) for both Student Sample and the norm group.

Administrations			Examinee Performance			Growth Rate (GSV per yr.)	
Test Date	Grade Level	Form	%ile Rank	GSV	Change over baseline	Examinee	Norm Group
08/26/2011	2.0 (F)	A	5.0	441	---	---	---
11/25/2011	2.3 (F)	B	9.0	448	7 * #	35.0	37.5
02/26/2012	2.6 (W)	A	7.0	454	13 * #	25.5	25.0

(\*) change over baseline is significant  
(#) change over previous administration is significant  
(N/A) Grade based norms unavailable for pre-k or adult administrations  
(-) All tests within this cluster not administered or administered out of level  
(/) Score(s) unavailable for summer administrations

GSV Chart



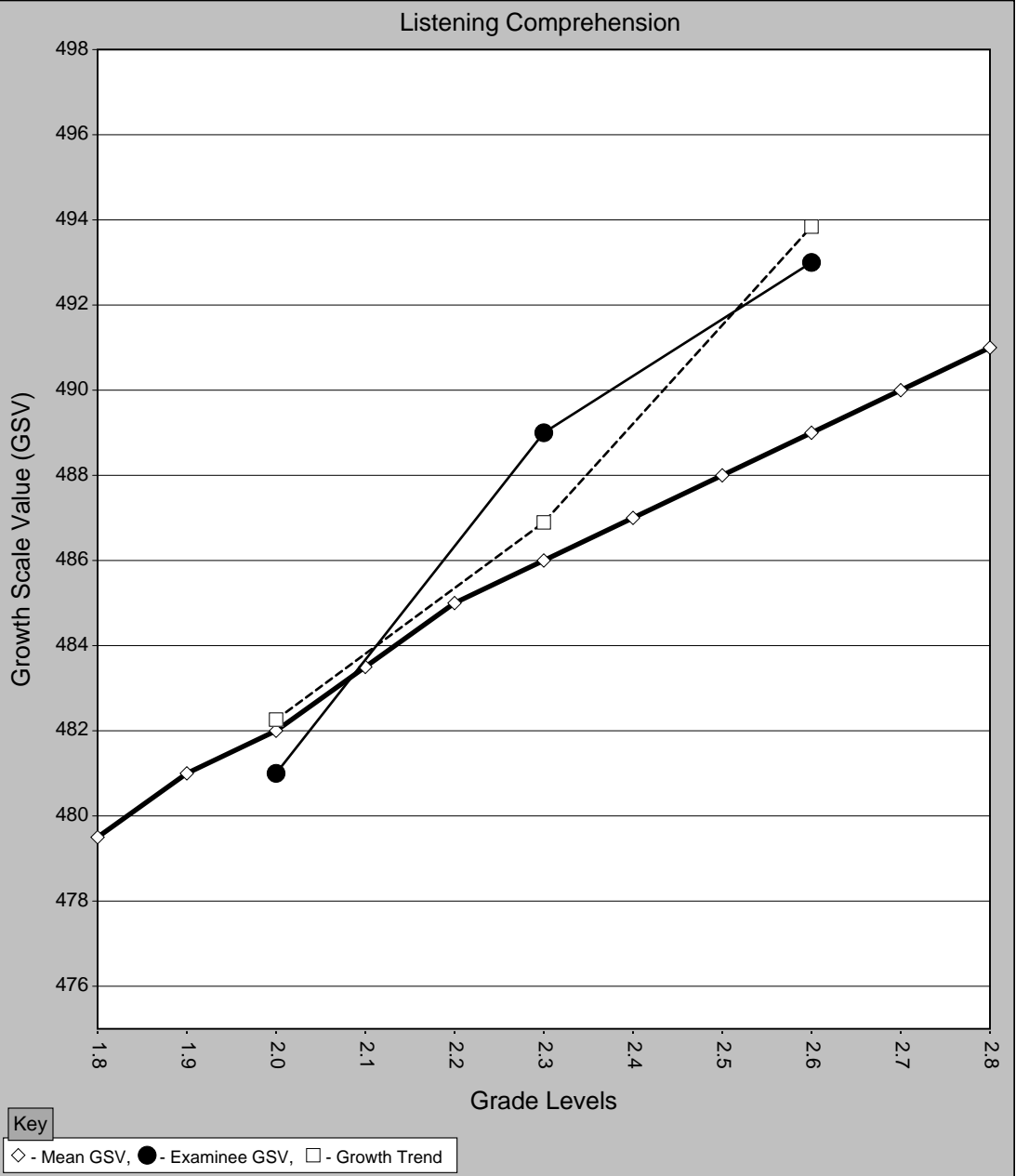
The WRMT-III Progress Report depicts Student Sample's performance over multiple test administrations using growth scale values (GSVs). GSVs are a type of developmental scale score that measures progress over the full range of WRMT-III reading skills.

The GSV Chart presents a graphical display of Student Sample's progress over administrations. Average GSVs for the norm group are represented by white diamonds connected by a solid line. Student Sample GSV scores are represented by black circles connected by a solid line. Student Sample growth rate averaged across administrations are represented by white squares connected by a dashed line. The table below provides useful data for each administration, including a percentile (%ile) rank, a GSV score, and the change in GSV score since the first administration (Change over baseline). The table also presents growth rates (in GSV units per year) for both Student Sample and the norm group.

Administrations			Examinee Performance			Growth Rate (GSV per yr.)	
Test Date	Grade Level	Form	%ile Rank	GSV	Change over baseline	Examinee	Norm Group
08/26/2011	2.0 (F)	A	39.0	481	---	---	---
11/25/2011	2.3 (F)	B	53.0	489	8	40.0	20.0
02/26/2012	2.6 (W)	A	58.0	493	12	23.2	14.0

- (\*) change over baseline is significant  
(#) change over previous administration is significant  
(N/A) Grade based norms unavailable for pre-k or adult administrations  
(-) Test not administered or administered out of level  
(/) Score(s) unavailable for summer administrations

GSV Chart



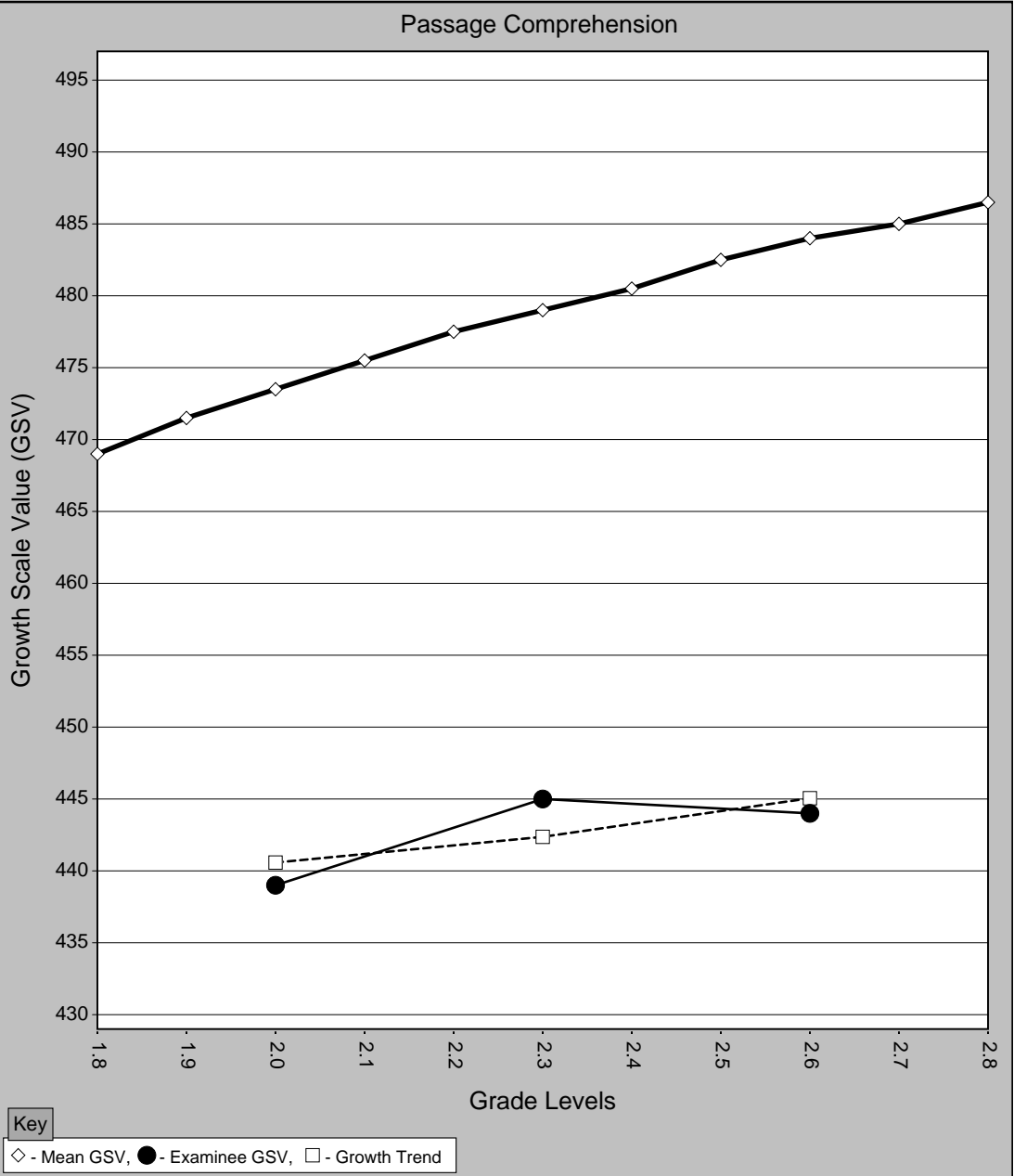
The WRMT-III Progress Report depicts Student Sample's performance over multiple test administrations using growth scale values (GSVs). GSVs are a type of developmental scale score that measures progress over the full range of WRMT-III reading skills.

The GSV Chart presents a graphical display of Student Sample's progress over administrations. Average GSVs for the norm group are represented by white diamonds connected by a solid line. Student Sample GSV scores are represented by black circles connected by a solid line. Student Sample growth rate averaged across administrations are represented by white squares connected by a dashed line. The table below provides useful data for each administration, including a percentile (%ile) rank, a GSV score, and the change in GSV score since the first administration (Change over baseline). The table also presents growth rates (in GSV units per year) for both Student Sample and the norm group.

Administrations			Examinee Performance			Growth Rate (GSV per yr.)	
Test Date	Grade Level	Form	%ile Rank	GSV	Change over baseline	Examinee	Norm Group
08/26/2011	2.0 (F)	A	3.0	439	---	---	---
11/25/2011	2.3 (F)	B	4.0	445	6	30.0	27.5
02/26/2012	2.6 (W)	A	2.0	444	5	8.9	21.0

- (\*) change over baseline is significant  
(#) change over previous administration is significant  
(N/A) Grade based norms unavailable for pre-k or adult administrations  
(-) Test not administered or administered out of level  
(/) Score(s) unavailable for summer administrations

GSV Chart



The WRMT-III Progress Report depicts Student Sample's performance over multiple test administrations using growth scale values (GSVs). GSVs are a type of developmental scale score that measures progress over the full range of WRMT-III reading skills.

The GSV Chart presents a graphical display of Student Sample's progress over administrations. Average GSVs for the norm group are represented by white diamonds connected by a solid line. Student Sample GSV scores are represented by black circles connected by a solid line. Student Sample growth rate averaged across administrations are represented by white squares connected by a dashed line. The table below provides useful data for each administration, including a percentile (%ile) rank, a GSV score, and the change in GSV score since the first administration (Change over baseline). The table also presents growth rates (in GSV units per year) for both Student Sample and the norm group.

Administrations			Examinee Performance			Growth Rate (GSV per yr.)	
Test Date	Grade Level	Form	%ile Rank	GSV	Change over baseline	Examinee	Norm Group
08/26/2011	2.0 (F)	A	30.0	452	---	---	---
11/25/2011	2.3 (F)	B	47.0	466	14 * #	70.0	47.5
02/26/2012	2.6 (W)	A	42.0	474	22 *	42.6	31.0

(\*) change over baseline is significant  
(#) change over previous administration is significant  
(N/A) Grade based norms unavailable for pre-k or adult administrations  
(-) Test not administered or administered out of level  
(/) Score(s) unavailable for summer administrations

GSV Chart

