

# Making the most of those Golden Years



Tools to help you support the UK's ageing population



© IanBennett\_UK

# Contents

**Supporting the aging population** .....

p3

**Mobility** .....

p4

**Independent living** .....

p5-7

**Mental Health** .....

p8-13

**Go Digital** .....

p14-15

**Stay Connected** .....

p16

# Supporting the aging population to make the most of their golden years

With today's changing environment, the UK's ageing population may feel more isolated and need additional support to live a healthy and fulfilling life. The recent pandemic has brought to light the need to get this support to each of these individuals in any way possible, be it social distanced face-to-face or Telepractice sessions.

Our aim is to enable the aging population to make the most of their golden years. We believe in the holistic approach of assessing both cognitive and physical functions at the early stages of aging in order to prevent loss of mobility and cognitive function, giving the elderly the gift of independent living as well as saving public funds.

In this brochure you can find our varied range of assessments that can provide care in 3 key areas: Mobility, independent living and Mental Health.



Mobility is often a primary issue influencing participation for the aging population. It is crucial to identify the needs and priorities of those who have mobility challenges in order to help them perform a variety of tasks that support successful participation in the community.

Pearson has the tools to support healthcare professional to screen or to establish a correct assessment of mobility conditions, which can be life-changing for the person experiencing difficulty. Having a clear understanding of an individual's strengths and challenges can considerably improve one's prospects of independent living and good mental health, whereas the incorrect diagnosis can accelerate cognitive decline and mobility, preventing individuals from enjoying their golden years to the fullest.

## **Bruininks Motor Ability Test (BMAT)**

This individually administered, standardised test of gross and fine motor skills is ideal for professionals in occupational therapy and physiotherapy, nursing, human performance, and physical rehabilitation.

**Qualification code:** B

**Age range:** 40 years +

**Administration:** Short Form and Individual Subtests – 15 to 20 minutes; Complete Battery – 60 to 75 minutes



Q-global™

Go Digital



# Independent living

Early development of adaptive skills among elderly citizens is needed to optimize independence; this includes early identification of areas of need, and strategies to address this; evaluating their capacity to live independently and provide performance-based results for monitoring strengths and need, in domains such as:

- ▶ Memory and orientation
- ▶ Managing money
- ▶ Managing home and transportation
- ▶ Health and safety
- ▶ Social adjustment

Pearson has the tools to support healthcare professionals working with ageing populations to help optimise the golden years.

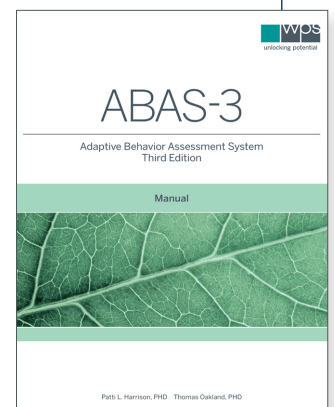
## Adaptive Behavior Assessment System 3rd Edition (ABAS-3)

This highly regarded assessment gives a complete picture of adaptive skills across the life span. It is particularly useful for evaluating those with developmental delays, autism spectrum disorder, intellectual disability, learning disabilities, neuropsychological disorders, and sensory or physical impairments.

**Qualification code:** B

**Age range:** Birth to 89 years

**Administration:** Individual – 15 to 20 minutes



## Independent Living Scales (ILS)

This reliable standardised tool helps to determine to what degree adults are capable of caring for themselves and their property, identifying the most appropriate living setting for adults who are experiencing a decline in cognitive functioning.

**Qualification code:** B

**Age range:** Adult

**Administration:** Individual – 45 minutes



## Rivermead Behavioural Memory Test – Third Edition (RBMT-3)

Predict everyday memory problems in people with acquired, non-progressive brain injury and monitor change over time.

**Qualification code:** B

**Age range:** 16 years to 89 years

**Administration:** Individual – 30 minutes



## Test of Everyday Attention (TEA)

Measure selective attention, sustained attention and attentional switching.

**Qualification code:** C

**Age range:** 18 to 80 years

**Administration:** Individual – 45 to 60 minutes



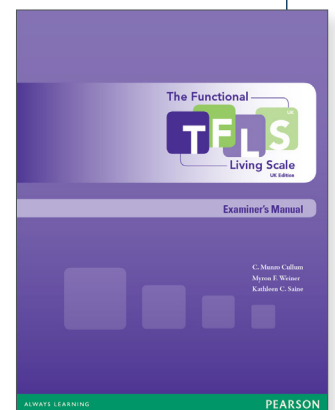
## The Functional Living Scale – UK Version (TFLS UK)

This test is an ecologically valid, performance-based measure of functional abilities with an emphasis on instrumental activities of daily living (IADL) skills, helping to assess an individual's ability to perform a variety of tasks that support independent functioning in the community. It is brief and easy to use and is especially well-suited for assessing those in assisted living and nursing home settings.

**Qualification code:** A

**Age range:** 16 years to 90 years 11 months

**Administration:** Individual – 15 minutes



## **Test of Premorbid Functioning – UK Version (TOPF UK)**

An effective test for predicting a person's pre-injury IQ & memory abilities.

**Qualification code:** C

**Age range:** 16 years to 89 years

**Administration:** Less than 10 minutes



# Mental Health

Cognitive decline can have a devastating effect on our aging population and their loved ones. However, with early identification the impact can be reduced with correct identification of strengths and needs.

Pearson offers healthcare practitioners access to assessment tools such as screening for dementia, functional memory assessments etc to help identify areas of need, and potential strategies to optimise participation, identify support needs, or determine appropriate living settings.

## Alzheimer's and Dementia

### Kaplan Baycrest Neurocognitive Assessment (KBNA UK)

This comprehensive screening tool combines behavioural neurology and traditional neuropsychological approaches to assessment.

**Qualification code:** C

**Age range:** 20 years to 89 years

**Administration:** Individual – 60 minutes



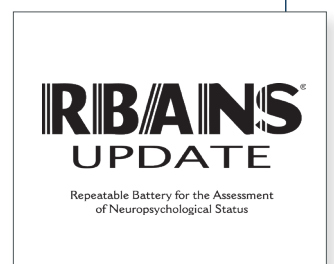
### Repeatable Battery for the Assessment of Neuropsychological Status Update (RBANS™ Update)

Brief, individually administered battery to assess neuropsychological status.

**Qualification code:** B

**Age range:** 12 years to 89 years

**Administration:** Individual – 20 minutes





## Rookwood Driving Battery (RDB)

This test is designed to assess basic cognitive functions essential for safe driving, including visual perception, praxis skills, and executive function. It will help therapists involved in driving assessment or those working in older adult and neurology services.

**Qualification code:** B

**Age range:** Adult

**Administration:** Individual – 30 to 40 minutes



## Wechsler Adult Intelligence Scale – Fourth UK Edition (WAIS-IV UK)

In recognition of emerging demographic and clinical trends, the WAIS-IVUK was developed to provide you with the most advanced measure of cognitive ability and results you can trust when addressing the changing clinical landscape.

**Qualification code:** C

**Age range:** 16 years to 90 years 11 months

**Administration:** Individual – 75 minutes



## Wechsler Abbreviated Scale of Intelligence – Second Edition (WASI-II)

This test provides a brief, reliable measure of cognitive ability for use in clinical, educational and research settings. This revision maintains the format and structure of the WASI while offering new content and improvements such as clinical utility and efficiency.

**Qualification code:** B

**Age range:** 6 years to 90 years 11 months

**Administration:** Individual – Four Subtest Form = 30 minutes;  
Two Subtest Form = 15 minutes



## Wechsler Memory Scale – Fourth UK Edition (WMS-IV UK)

The Wechsler Memory Scale – Fourth UK Edition (WMS-IVUK) is an individually administered assessment of memory and working memory. The WMS-IVUK also contains a brief evaluation of cognitive status.

**Qualification code:** C

**Age range:** 16 years to 90 years 11 months

**Administration:** Individual – 75 minutes



Go Digital



Q-global™  
Go Digital



## Anxiety and depression

### Beck Anxiety Inventory® (BAI®)

**Measure the severity of anxiety in adults and adolescents**

The BAI evaluates both physiological and cognitive symptoms of anxiety and item overlap where other self-report depression inventories is minimised.

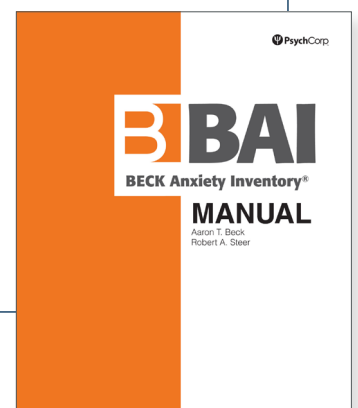
**Qualification code:** B

**Age range:** 17 years and older

**Administration:** Individual – 5 to 10 minutes



Q-global™  
Go Digital



## **Beck Depression Inventory®-II (BDI®-II)**

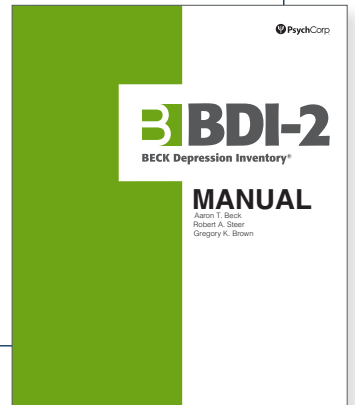
### **Assess the severity of depression**

A widely used instrument used to detect depression. This edition features items that will bring it in line with current depression criteria of the Diagnostic and Statistical Manual of Mental Disorders – Fourth Edition (DSM-IV).

**Qualification code:** B

**Age range:** 17 years to adult

**Administration:** Individual – 5 to 10 minutes



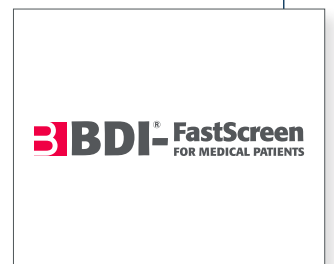
## **Beck Depression Inventory® – FastScreen (BDI®-FastScreen)**

The BDI®-FastScreen was constructed to reduce the number of false positives for depression in patients with known biological, medical or alcohol/substance abuse problems. It should not however be considered as a substitute for the 21-item BDI®-II, but as a 7-item self-report, case-finding instrument that screens for depression in adolescents and adults.

**Qualification code:** B

**Age range:** Adult

**Administration:** Individual – 5 minutes



## **Beck Hopelessness Scale® (BHS®)**

### **Measure three major aspects of hopelessness**

This test helps measure 3 major aspects of hopelessness: Feelings about the future; Loss of motivation and Expectations. It is designed to measure an individual's attitudes about their long-term future and consists of 20 true/false items with patients either endorsing a pessimistic statement or denying an optimistic statement. The BHS acts as a powerful predictor of suicidal intent.

**Qualification code:** B

**Age range:** 17 to 80 years

**Administration:** Individual – 10 minutes



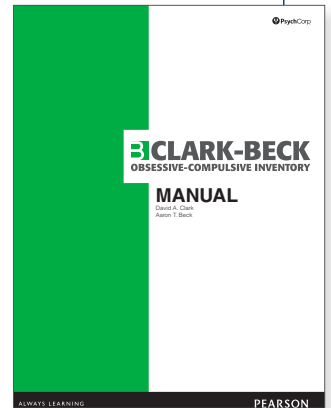
## Clark-Beck Obsessive-Compulsive Inventory (CBOCI)

An efficient screener designed to identify obsessive and compulsive symptoms in individuals ages 17 and older. The CBOCI can be used in conjunction with the Beck Scales for depression, anxiety, hopelessness and suicide ideation for a more comprehensive measure of psychopathology; this integration can help in understanding possible comorbidity and in formulating and evaluating treatment.

**Qualification code:** B

**Age range:** 17 years and older

**Administration:** Individual – 10 to 20 minutes



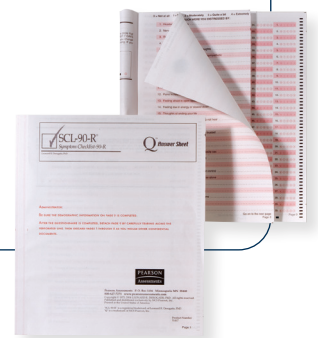
## Symptom Checklist-90-Revised (SCL-90-R)

This instrument helps evaluate a broad range of psychological problems and symptoms of psychopathology. The instrument is also useful in measuring patient progress or treatment outcomes.

**Qualification code:** B

**Age range:** 13 years and older

**Administration:** Individual – 12 to 15 minutes



Learn more on our Aged care assessments and resources



## Why choose Q-global?

**Get access to the industry's gold standard assessment tools from any computer, at any time!**

Mental health specialists, educators, and other professionals use the Q-global® testing system to quickly and efficiently administer assessments, generate scores, and produce reports. Q-global® houses the industry's gold standard in assessment tools and is accessible from any computer, any time.

### How it works

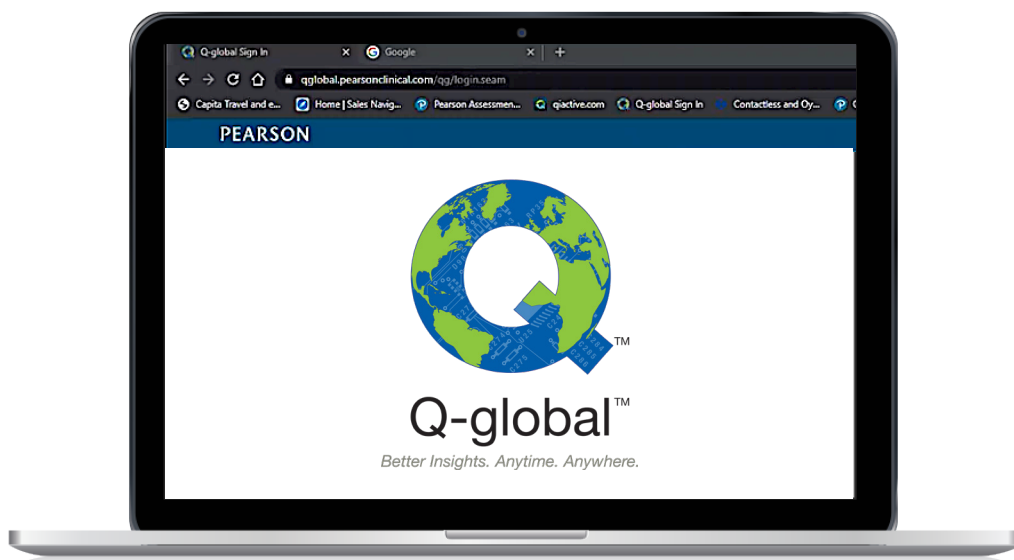
You can access your Q-global account through any device connected to an up to date web browser. You can then manage and retrieve examinee information, generate scores from assessment data, and produce accurate, comprehensive assessment reports.

### Features

- On Screen administration (OSA)
- Remote On Screen administration (ROSA) sent via email to an examinee, parent or caregiver
- Manual entry via paper record form.
- Report generation for a number of assessments

**Perfect for your Telepractice sessions!**

**Learn more and view assessment library here**



# Why choose Q–interactive

## One System, two tablets, tons of power

Q–interactive saves you time, while adding unprecedented flexibility, portability, convenience and efficiency. With Q–interactive™ you no longer have to simultaneously juggle cumbersome manuals, stimulus books, record forms, notepads, a stop–watch, and manipulatives to do your job.

## How it works

Q–interactive is a comprehensive digital system that streamlines the entire assessment process. Administration occurs using two tablets that “communicate” with each other. Use one tablet to administer instructions, record and score responses, take notes and control visual stimuli. Your client uses the other to view and respond to stimuli. Q–interactive also features a secure web portal where you create your client profiles, choose and assign assessments and also where you review scored data post assessment.

## Features

- Offers an interactive and engaging test experience for your students/ clients
- Captures and stores student/ client data quickly and easily
- Provides accurate real–time scoring
- Uncompromised data security to protect your student’s/ client’s profile.

[Learn more and view assessment library here](#)





© Shutterstock/ Monkey Business



## Stay Connected

**[Sign up to our newsletter](#)** to receive the latest news.

**Follow us on Social media:**



**[@PearsonclinUK](#)**



**[@Pearson Clinical Assessment UK](#)**



**[@PearsonclinUK](#)**