

Installation and Registration Summary

KeyMaths3 – Essential Resources(ER) L-I

The purpose of this document is to provide you with a ‘Step by Step’ guide for installing and registering the KeyMaths3 application. For more detailed information on any of the application’s features, please refer to, or download the *User Guide* from the KeyMaths 3 CD.

We recommend this product be installed by your IT department or it must be installed by a user who has Local Administration rights on the computer where the software is being installed.

Step 1 – Install the application

Install the KeyMaths3 Essential Resources (ER) L-I software as per the installation instructions located on the inside panel on the front cover of your CD ROM case – refer Figure 1

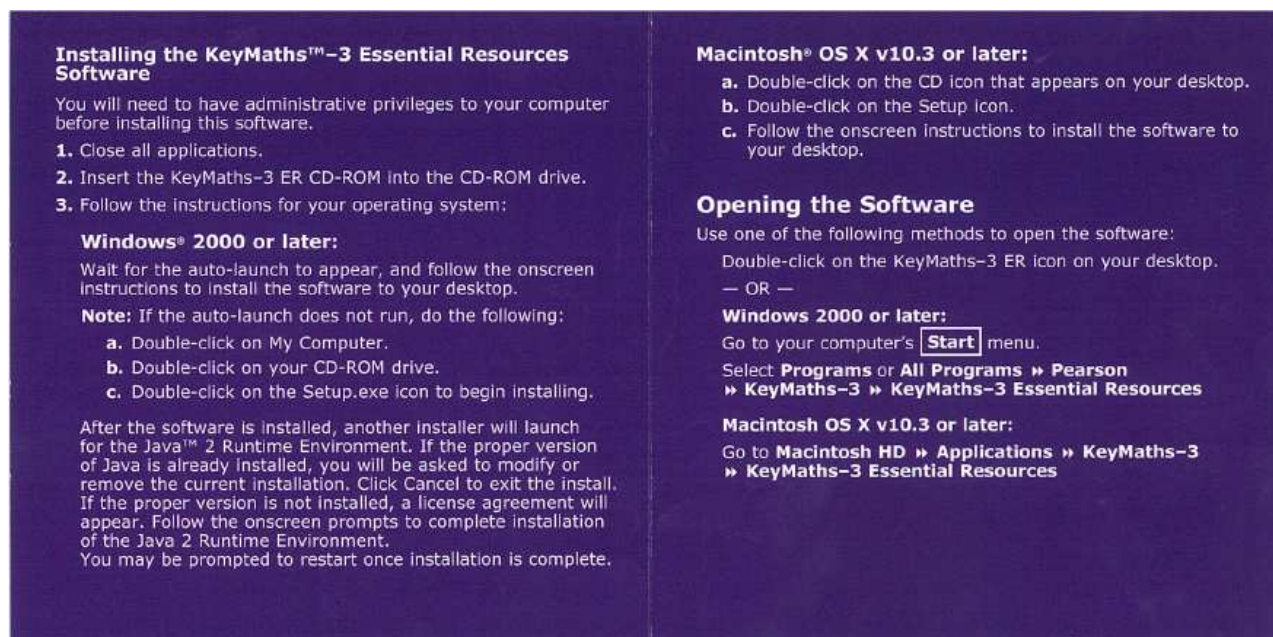


Figure 1 – Install instructions

Note: Once you have completed the installation as per the instructions you will notice both the KeyMaths 3 Essential Resources (ER) and the Diagnostic Assessment (DA) shortcut icons will appear on your desktop even if you have only purchased/installed one of the products – refer Figure 2

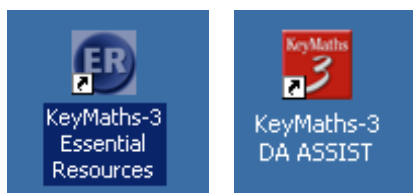


Figure 2 – Shortcut Icons

Important – Before proceeding to step 2 you will need the information on the label located on the back of your CD-ROM case – refer Figure 3

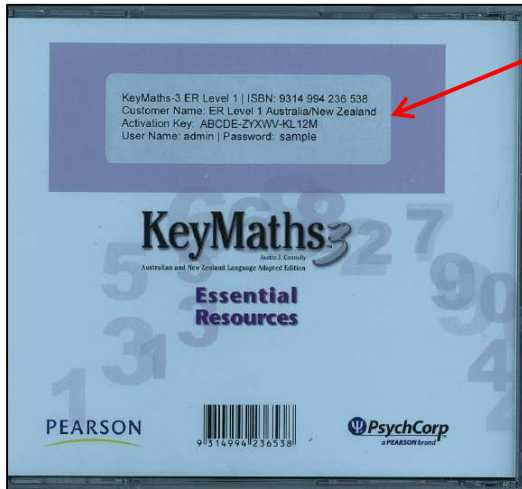


Figure 3 – Back of CD

Step 2 – Getting Started – Registering the application.

In order to start using your new application you need to complete the registration process. To do this please follow these steps.

1. Once the disc is installed **double click** on the Essential Resources (ER) shortcut icon – refer Figure 4.

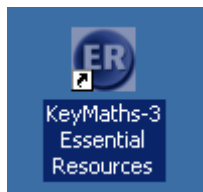


Figure 4 – Desktop Icon

Note: The DA Scoring and Reporting window will appear first and then the Essential Resources window and Login screen will open – refer Figure 5

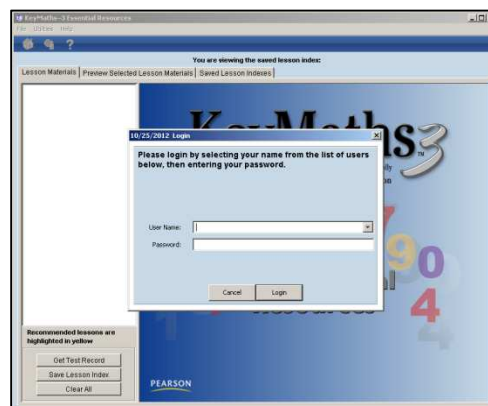


Figure 5 – DA and ER window

2. When *First Run* window appears, select from the options and **click** *Next* – refer Figure 6

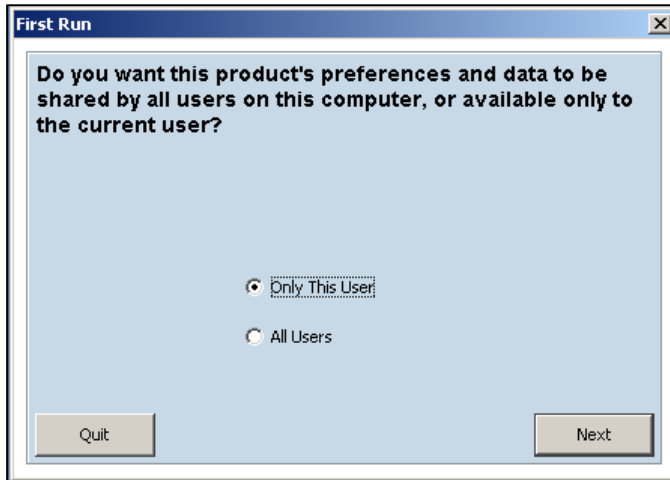


Figure 6 – First Run window

3. When *Database Location* window appears, select from the options and **click** *Next* – refer Figure 7

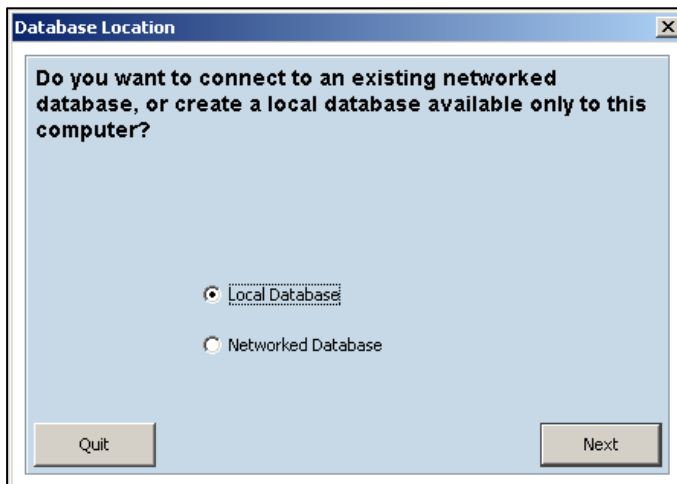


Figure 7 – Database Location window

4. In the *Activation* box next to the appropriate product **enter** the Customer Name and Activation Key, exactly as it appears on the label on the back of your CD-ROM case. Then **Click Continue** – refer Figure 8

Activation

Please enter your Customer Name and Activation Key exactly as they appear on the label attached to your CD-ROM case. Fields are not case sensitive.

	Customer Name	Activation Key
KeyMaths-3 DA ASSIST		
KeyMaths-3 ER Level I	ER Level1 Australia/New Zealand	ABCDE-ZYXWV-KL12M
KeyMaths-3 ER Level II		

Continue Cancel

Macintosh®/Windows®
KeyMaths³
 Austin J. Connolly
 Australian and New Zealand Language Adapted Edition

5 6 8 2 7
 9
 3
 Essential Resources
 1
 CD-ROM
 L-I
 PEARSON
 PsychCorp
 a PEARSON brand

KeyMaths³ ER Level 1 | ISBN: 9314 994 236 538
 Customer Name: ER Level 1 Australia/New Zealand
 Activation Key: ABCDE-ZYXWV-KL12M
 User Name: admin | Password: sample

KeyMaths³
 Austin J. Connolly
 Australian and New Zealand Language Adapted Edition

Essential Resources
 PEARSON
 PsychCorp
 a PEARSON brand

Figure 8 – Overview

The Customer Name and Activation Key is different for each product. Although the DA (Diagnostic Assessment) and the ER (Essential Resources) L-II fields are all showing **only** enter the information for the Essential Resources L-I.

Note: If you have previously installed either of the following:

1. KeyMaths3 Essential Resources (ER) L-II, or
2. KeyMaths3 Diagnostic Assessment (DA)

The *Customer name* and *Activation Key* details will automatically populate in the appropriate fields in the Activation screen – refer Figure 9

	Customer Name	Activation Key
KeyMaths-3 DA ASSIST	KeyMaths3 Australia/New Zealand	EDCBA-VWXYZ-ML21K
KeyMaths-3 ER Level I		
KeyMaths-3 ER Level II	ER Level 2 Australia/New Zealand	GHIJK-PQRST-CB34A

Figure 9 – Overview

If this is the first time you are installing one of the KeyMaths3 products, when you click on the icon, **only** enter the information for the software you are installing ex. KeyMaths3 Essential Resources (ER) L-I.

Note: When opening the program you will also see the options for the Essential Resources (ER) L-II but you cannot open L-II without first installing the software and adding the Customer Name and Activation Key.

5. **Login:** Enter The User Name and Password which is also located on the label at the back of the CD-ROM case. Then **Click Login** – refer Figure 10

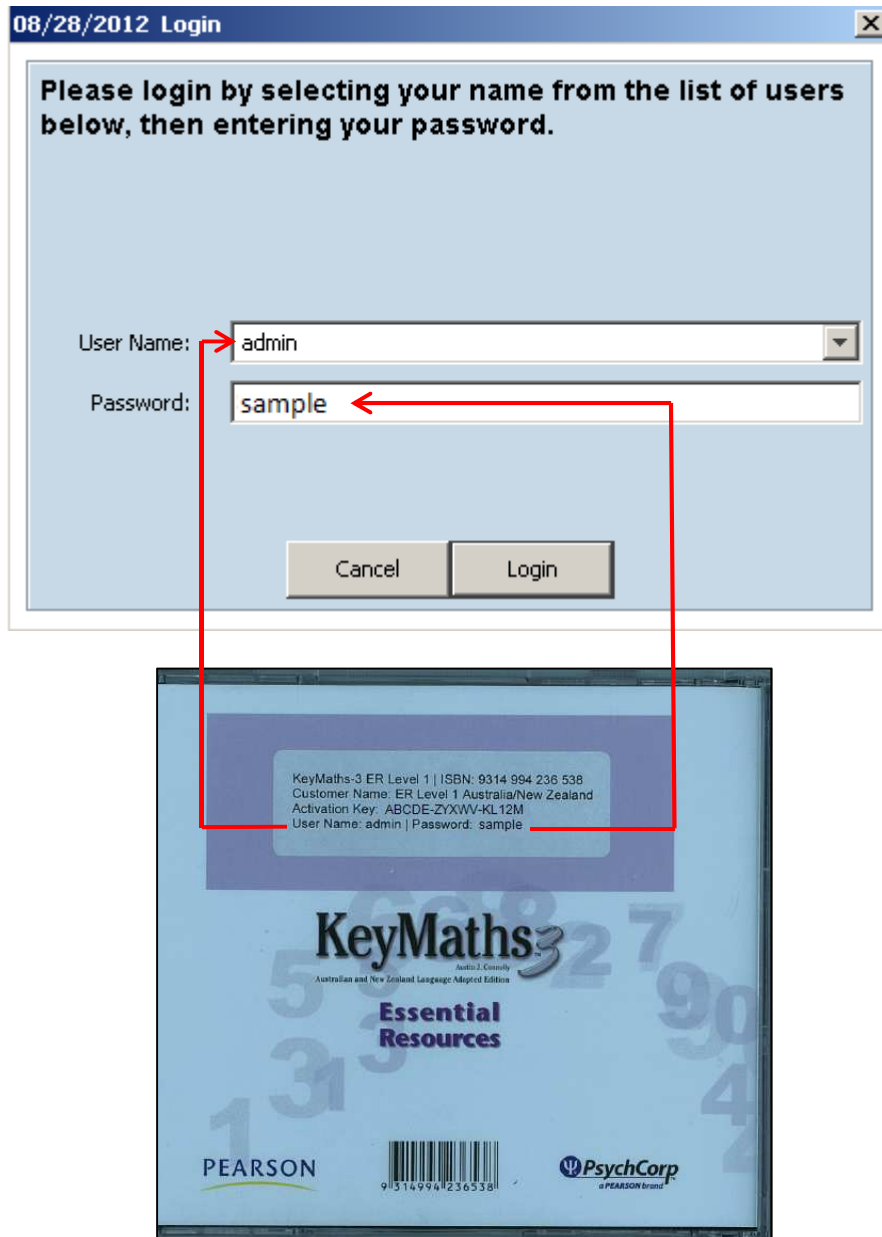


Figure 10 – Login Window and Back of CD

If you later purchase the KeyMaths3 Essential Resources (ER) L-II or Diagnostic Assessment (DA) please refer to our website for Installation instructions.