

Installation and Registration Summary

KeyMaths3 – Essential Resources(ER) L-II

The purpose of this document is to provide you with a 'Step by Step' guide for installing and registering the KeyMaths3 application. For more detailed information on any of the application's features, please refer to, or download the *User Guide* from the KeyMaths 3 CD.

We recommend this product be installed by your IT department or it must be installed by a user who has Local Administration rights on the computer where the software is being installed.

Step 1 – Install the application

Install the KeyMaths3 Essential Resources (ER) L-II software as per the installation instructions located on the inside panel on the front cover of your CD ROM case – refer Figure 1

Installing the KeyMaths™-3 Essential Resources Software

You will need to have administrative privileges to your computer before installing this software.

1. Close all applications.
2. Insert the KeyMaths-3 ER CD-ROM into the CD-ROM drive.
3. Follow the instructions for your operating system:

Windows® 2000 or later:

Wait for the auto-launch to appear, and follow the onscreen instructions to install the software to your desktop.

Note: If the auto-launch does not run, do the following:

- a. Double-click on My Computer.
- b. Double-click on your CD-ROM drive.
- c. Double-click on the Setup.exe icon to begin installing.

After the software is installed, another installer will launch for the Java™ 2 Runtime Environment. If the proper version of Java is already installed, you will be asked to modify or remove the current installation. Click Cancel to exit the install. If the proper version is not installed, a license agreement will appear. Follow the onscreen prompts to complete installation of the Java 2 Runtime Environment. You may be prompted to restart once installation is complete.

Macintosh® OS X v10.3 or later:

- a. Double-click on the CD icon that appears on your desktop.
- b. Double-click on the Setup icon.
- c. Follow the onscreen instructions to install the software to your desktop.

Opening the Software

Use one of the following methods to open the software:

Double-click on the KeyMaths-3 ER icon on your desktop.
— OR —

Windows 2000 or later:

Go to your computer's **Start** menu.
Select **Programs** or **All Programs** » **Pearson** » **KeyMaths-3** » **KeyMaths-3 Essential Resources**

Macintosh OS X v10.3 or later:

Go to **Macintosh HD** » **Applications** » **KeyMaths-3** » **KeyMaths-3 Essential Resources**

Figure 1 – Install instructions

Note: Once you have completed the installation as per the instructions you will notice both the KeyMaths 3 Essential Resources (ER) and the Diagnostic Assessment (DA) shortcut icons will appear on your desktop even if you have only purchased/installed one of the products – refer Figure 2

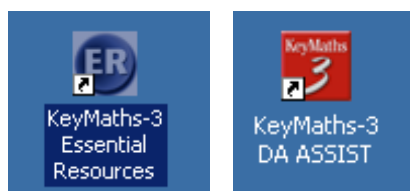


Figure 2 – Shortcut Icons

Important – Before proceeding to step 2 you will need the information on the label located on the back of your CD-ROM case – refer Figure 3

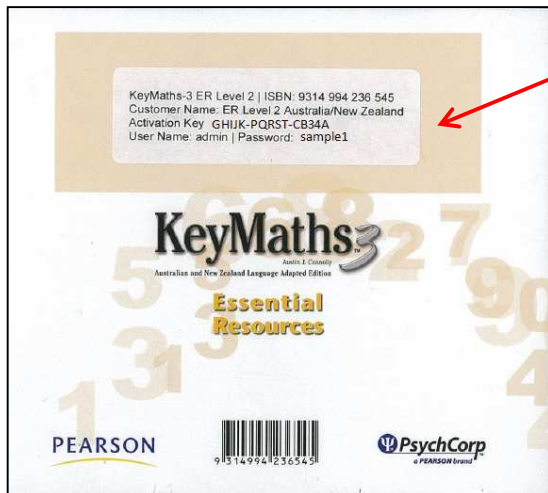


Figure 3 – Back of CD

Step 2 – Getting Started – Registering the application.

In order to start using your new application you need to complete the registration process. To do this please follow these steps.

1. Once the disc is installed **double click** on the Essential Resources (ER) shortcut icon – refer Figure 4.

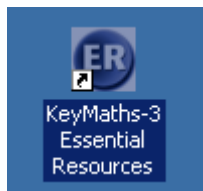


Figure 4 – Desktop Icon

Note: The DA Scoring and Reporting window will appear first and then the Essential Resources window and Login screen will open – refer Figure 5

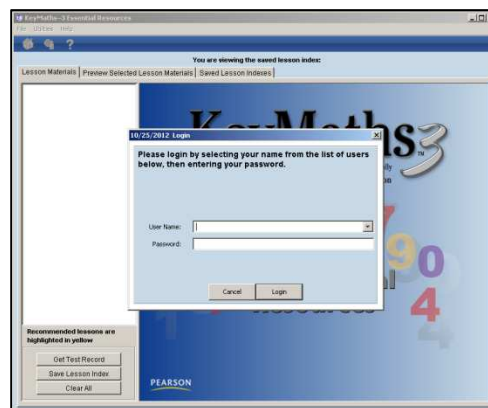
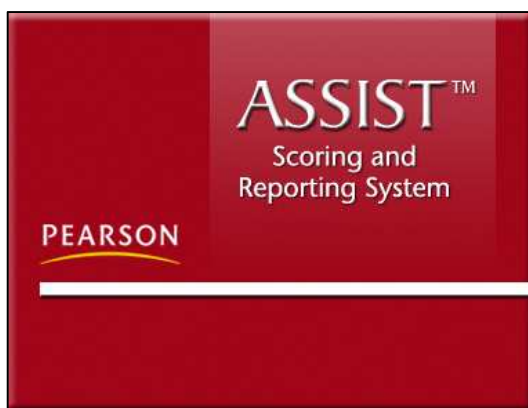


Figure 5 – DA and ER window

2. When *First Run* window appears, select from the options and **click** *Next* – refer Figure 6

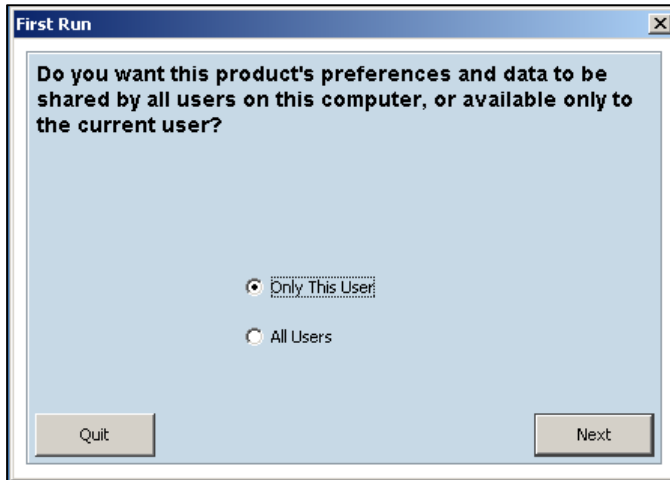


Figure 6 – First Run window

3. When *Database Location* window appears, select from the options and **click** *Next* – refer Figure 7

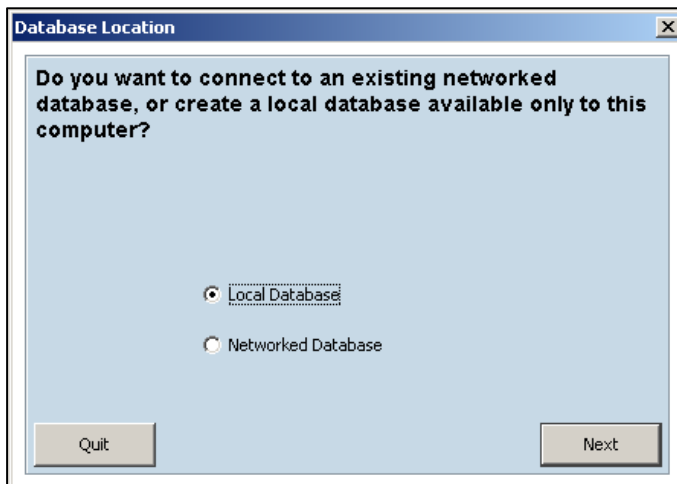


Figure 7 – Database Location window

4. In the *Activation* box next to the appropriate product **enter** the Customer Name and Activation Key, exactly as it appears on the label on the back of your CD-ROM case. Then **Click Continue** – refer Figure 8

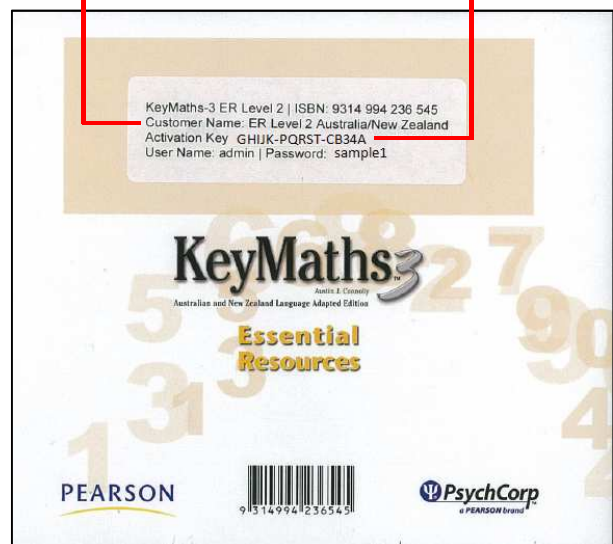
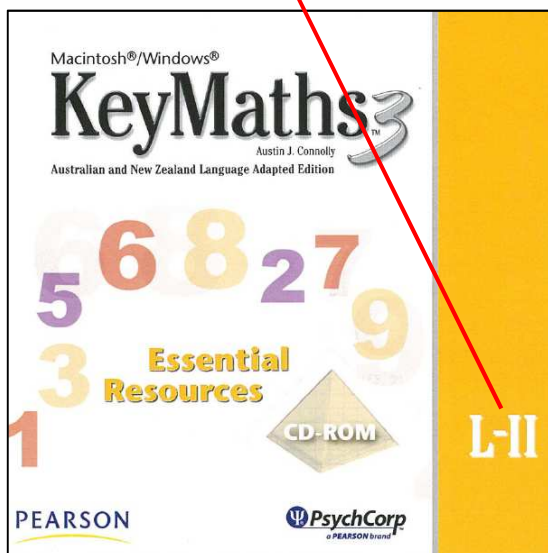


Figure 8 – Overview

The Customer Name and Activation Key is different for each product. Although the DA (Diagnostic Assessment) and the ER (Essential Resources) L-I fields are all showing **only** enter the information for the Essential Resources L-II

Note: If you have previously installed either of the following:

1. KeyMaths3 Essential Resources (ER) L-I, or
2. KeyMaths3 Diagnostic Assessment (DA)

The *Customer name* and *Activation Key* details will automatically populate in the appropriate fields in the Activation screen – refer Figure 9

Activation

Please enter your Customer Name and Activation Key exactly as they appear on the label attached to your CD-ROM case. Fields are not case sensitive.

	Customer Name	Activation Key
KeyMaths-3 DA ASSIST	KeyMaths3 Australia/New Zealand	EDCBA-VWXYZ-ML21K
KeyMaths-3 ER Level I	ER Level1 Australia/New Zealand	ABCDE-ZYXWV-KL12M
KeyMaths-3 ER Level II		

Continue Cancel

Figure 9 – Overview

If this is the first time you are installing one of the KeyMaths3 products, when you click on the icon, **only** enter the information for the software you are installing ex. KeyMaths3 Essential Resources (ER) L-II.

Note: When opening the program you will also see the options for the Essential Resources (ER) L-I but you cannot open L-I without first installing the software and adding the Customer Name and Activation Key.

5. **Login:** Enter The User Name and Password which is also located on the label at the back of the CD-ROM case. Then **Click Login** – refer Figure 10

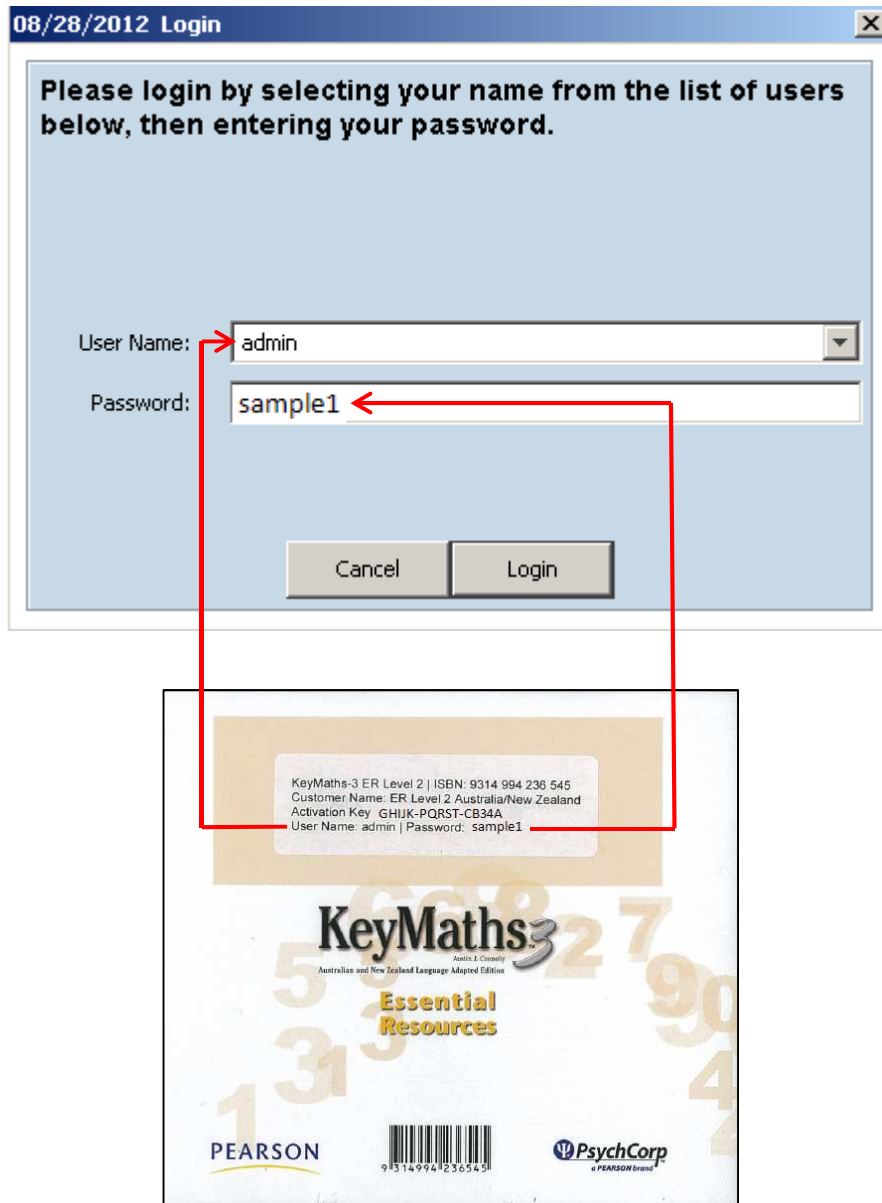


Figure 10 – Login Window and Back of CD

If you later purchase the KeyMaths3 Essential Resources (ER) L-I or Diagnostic Assessment (DA) please refer to our website for Installation instructions.